



Glion Connect BBA 20

**BACHELOR'S IN INTERNATIONAL HOSPITALITY BUSINESS
FULL SEMESTER PRACTICAL ARTS REMOTE STUDY OPTION**

For Spring 2023 intake





A complete study solution that delivers Glion Excellence directly to your desktop

At Glion, we believe that the best way to learn is by doing. This is why our Bachelor's (BBA) in International Hospitality Business begins with a semester focused on hospitality's Practical Arts.

Learning from our expert faculty, throughout this semester you acquire practical and transferable skills that are essential foundations to a successful career in hospitality or any other customer-facing industry.

To offer maximum flexibility in today's challenging times, we have introduced Connect BBA 20, a remote study solution that covers your complete, 20-week BBA first semester. With Glion Connect, you can experience our world-class Practical Arts training with no risk of interruption due to restrictions on international travel or on-campus activities.



Glion Connect BBA 20: excellence unlimited

Get straight to the heart of luxury hospitality

Semester 1 Hospitality Excellence Glion Connect BBA 20	Semester 2 Professional Immersion Internship	Semester 3 Hospitality Fundamentals Bulle or London	Semester 4 Hospitality Management Bulle or London	Semester 5 Management Practice Internship	Semester 6 Integrated Business Strategies Bulle or London	Semester 7 Specialization and Business Project Bulle or London	BBA 3.5-Year Program
---	---	--	--	--	--	---	--------------------------------

Your first, Practical Arts semester lays the foundations for your Bachelor studies with Glion. By the end of these 20 weeks, you will have developed an understanding of the excellence required in hotel and restaurant operations; becoming equipped with practical, professional skills learned from internationally-renowned masters of their craft.

Glion Connect transforms our Practical Arts teaching into a series of bespoke remote classes, which deliver the same learning outcomes as you'd experience through a full semester taught on campus.

Before your remote studies begin, we will send you a special 'welcome package', so you are ready to hit the ground running. At the conclusion of the semester, you have the option to undertake a professional internship; or you can join us on campus to study your first academic semester.

TAKE YOUR LEARNING TO NEW LEVELS

Each remote study module is supported by an exciting program of extracurricular activities designed to build on your learning in a fun and engaging way. Activities include competitions and challenges, live demonstrations plus guest speaker interviews with iconic figures from the worlds of hospitality and gastronomy.



BBA semester 1 =

20 weeks
remote learning
from home

Semester 1 overview

Receive your Glion student's welcome package

Even though you are beginning your studies at home, you are part of the Glion community from day one. We will deliver a special branded welcome package to you, to enhance your sense of belonging and provide some of the tools and resources you will need for your Practical Arts studies.

20 weeks
remote learning from home

Modules

INDUCTION

WINE, BAR & BEVERAGES

- Beverages from Around the World
- The Universe of Wine by Paolo Basso I & II, Best Sommelier of the World
- The World of Bars & Cocktails

FOOD & GASTRONOMY

- The Art of Gastronomy - Culinary I & II, French Pastry
- Themed Cuisine
- Luxury Gastronomy
- International Cuisines
- Arts, Aesthetics & Design in Modern Pastry

HOSPITALITY IMMERSION

- Introduction to Hospitality
- Running a Hotel Property Management System
- The Face of the Modern Hotel Industry and Resorts
- Spa Operations & Spa Profitability Certificates
- Private Aviation
- Career & Leadership in Hospitality

COMMUNICATION & INDIVIDUAL PROJECT

- Business English & Business Professional Communication
- Individual project

How?

- Videos and teasers
- PPT voiceover & materials
- Live sessions with faculty
- Student's assessment
- Personalized coaching & mentoring

Extracurricular activities

- Personalized career services
- Student Affairs & co-curricular
- Keeping Connected

= **20** weeks

BBA semester 1
complete

Start your internship or
begin semester 3 on
campus



Remote learning that doesn't feel remote

As a state-of-the-art approach to 'virtual' study, Glion Connect offers live classes and demonstrations, individual support and one-to-one coaching, plus interactive games and challenges as its signature components.

In addition, you can listen to expert contributors, then put your knowledge to the test through an individual project that counts towards your overall evaluation. The Connect experience will also bring added stimulation to your senses of sight, taste and smell!

Through the work of our Student Affairs team, you will feel a close engagement with Glion and your fellow students on campus. You will also have the opportunity to join our popular clubs and committees, as well as to apply for our Student Ambassador program.



Curious to see what a remote learning day may look like?

60 minutes

**self study on
given sources**

- Digital library

30 minutes

**course introduction &
learning outcomes**

- PowerPoint with voice over

60 minutes

**course
content**

- Video & PowerPoint

60 minutes

**assignment –
students' practice**

- Video & PowerPoint

75 minutes

**live presentation from
an expert & Q&A**

- Live streaming

15 minutes

**key takeaways
of the day**

- Video & PowerPoint

60 minutes

**Business English & Business
Professional Communication**

- Live streaming



6 hours

per day in total



Your personalized career services

Throughout your remote learning experience, you will have direct access to our highly personalized career services, with the same levels of hands-on support and guidance that you would experience if you were with us on campus.

Glion Connect & Recruit – Online Recruitment Day

This is your chance to meet and connect with recruiters from many locations around the world – from the comfort of your own desktop. Virtually visit individual booths of the companies which interest you, ask your questions to the recruiters directly, apply for internships, take interviews and much more.

Benefits to you



Expert mentoring and one-to-one coaching from our Career & Internship team



Discover the Glion Connect BBA 20
curriculum in more detail



Induction Week 1

Benefits to you



Feel part of the
Glion experience
from day one



Introduction to your campus & program

During your induction week, we will provide you with an overview of Glion, our BBA program's first semester, how we teach and the range of digital tools we will use to enhance your remote studies.

You will also discover how our dedicated Career & Internship team support you throughout your Glion journey; including advice on how to find, select and prepare for your first professional internship.

EXTRACURRICULAR ACTIVITIES INCLUDE:

- Embark on a Glion campus tour
- What will my Virtual Learning Environment look like?
- The opportunity to get together with your classmates via video conferencing



Wine, Bar & Beverages

Benefits to you



You'll learn by doing,
supported by masters
of their craft



Wine, Bar & Beverages

The complete beverage universe covered in a series of engaging and interactive classes spread throughout the 20 weeks of the Connect program. You will learn about wine, spirits, cocktails/mocktails and mixology, plus the world's favorite hot beverage, coffee.

Experience a wine masterclass with Paolo Basso, a World's Best Sommelier; discover the world of spirits and liqueurs guided by representatives of celebrated luxury brands; and learn how to mix delicious cocktails and mocktails. You will also receive instruction from an expert coffee barista.

EXTRACURRICULAR ACTIVITIES INCLUDE:

- Demonstrations from award-winning bartenders
- Virtual cellar visits
- Cocktail/mocktail making contests
- An opportunity for you to showcase the drinks that are local favorites in your country

Meet Paolo Basso

A passion for oenology has taken Paolo Basso from his native Lombardy, in Italy, to a global career as a renowned sommelier.

His passion, persistence and quest for perfection have earned him accolades such as Best Sommelier of Switzerland (1997), Best Sommelier of Europe (2010) and Best Sommelier of the World (2013).

Paolo is himself a wine producer, with a vineyard in Ticino, Switzerland, as well as a wine trader and consultant through his company, Paolo Basso Wine.

1997 **Best Sommelier
of Switzerland**

2010 **Best Sommelier
of Europe**

2013 **Best Sommelier
of the World**



Food & Gastronomy

Benefits to you



You'll receive world-class
gastronomic instruction



Food & Gastronomy

Gourmet food is at the heart of great hospitality. In this module you'll encounter 'bistronomy' (bistro gastronomy), natural and healthy cuisine, plus different flavors of international cuisine from Europe, Asia and The Americas.

You will also discover luxury gastronomy, including iconic and mouth-watering delicacies such as truffles and caviar, in the company of experts from some of their most celebrated producers. Last but not least, a week exploring culinary styles and themes covers topics such as picnics, barbecues and the 'Best of Switzerland'.

Other modules let you see behind the scenes of the international restaurant business, while learning the secrets of successful restaurant concepts and how restaurant economics play out.

EXTRACURRICULAR ACTIVITIES INCLUDE:

- Culinary and pastry practical challenges
- Tips and tricks from expert chefs





Hospitality Immersion

Benefits to you



You'll develop a
mix of hard and
soft skills



Hospitality Immersion

After an introduction to the global hospitality industry, this module takes you directly into the nerve center of the hotel operation. You will get to grips with the Property Management Systems that are the backbone of the hotel business, while also learning how to manage the all-important rooms division.

In your final week of Practical Arts study, you are immersed once again in the world of hotels, with live 'virtual' hotel tours featuring iconic luxury properties, during which you will have the opportunity to put your questions to experienced hoteliers responsible for a wide range of operational functions.

EXTRACURRICULAR ACTIVITIES INCLUDE:

- Hotel management business game
- Expert guest lectures
- A chance to earn an Online Certificate in Spa Operations





Communication & individual project

Benefits to you



You'll build your
language skills and
leadership toolkit



Communication & individual project

LANGUAGE STUDY

Throughout the first half of your Connect semester, you will take part in English language classes and assignments, to improve both your written and oral business English.

PROFESSIONAL COMMUNICATION

In this special course you will learn the secrets of effective business communication – an essential component of your future leadership toolkit.

INDIVIDUAL PROJECT

An individual project to strengthen your understanding of what you have learned, while also contributing to your final evaluation.

EXTRACURRICULAR ACTIVITIES INCLUDE:

- Prepare your own “elevator speech”
- Online challenges

What they say about the Glion Connect option



“During remote learning what really changed is that we didn’t have the face-to-face interactions with teachers and students; we also had to take ownership for coming to class and being responsible. Teachers were convenient with the time zones during remote learning, so all students could join classes, and they were flexible with deadlines.

I came back on campus to complete my semester and be reunited with my friends. The program is adapted to the current situation, so we can learn effectively. I feel safe on campus, I think Glion really has a lot of safety measures to protect us and a good security team to take care of all the students.

Future career ambitions: I would like to work in the hospitality industry, maybe as a Hotel Manager, but I keep my options open.”



THANWARAT - SEMESTER 1

Glion student from Thailand,
studying remotely through Glion Connect



“I decided to study my BBA remotely for my own wellbeing and future. I was highly motivated to start my BBA journey with Glion Connect, because through the online mentoring and offline tasks I would still feel part of the Glion family, even at a distance and in different time zones.

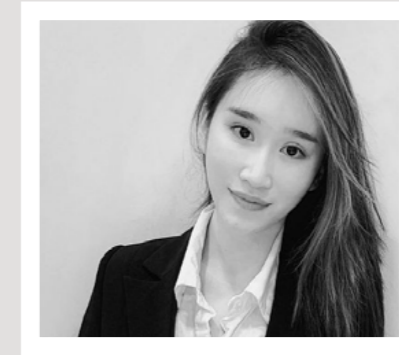
I have started to get to know my online class colleagues with the help of the introduction forum, and I am highly captivated by the different courses we have each week. I aspire to operate and manage my parents’ resorts in the future. Therefore, I am very much looking forward to the Rooms Division and Hotel Operations courses.

At home, my remote learning kit includes a laptop, books, and stationery. Glion also kindly sent us a Glion Connect box, which includes wireless headphones to ensure that I am technologically ready for Semester 1.”



VANESSA - SEMESTER 1

Glion student from Indonesia,
studying remotely through Glion Connect



“Glion Connect came to me like a miracle during a hard time in my education journey. I was in difficulty deciding whether should I go to study in Switzerland during this pandemic or postpone my study for quite a long time. Then, the school gave me an opportunity to continue achieving my goal of education with Glion Connect.

This is my first time experiencing remote classes, but I didn’t have any trouble because Glion Connect explained it in a very detailed way so that all the students can get the most out of the lectures.

Even though I’m 5,972 miles away from the school, the help and very welcoming spirit of Glion’s teachers and staff have made me feel really close and connected to the school and my classmates. The school organizes different events and activities for the student to stay in touch, get to know each other, and I can’t wait to see all my lovely friends and teachers on campus.”



HELEN - SEMESTER 1

Glion student from Vietnam,
studying remotely through Glion Connect

Tuition & other fees

Bachelor's in International Hospitality Business with Glion Connect BBA 20 learning option

Semester 1: 20 weeks
remote learning from home

**VALID FOR STUDENTS
STARTING IN SPRING 2023**

Breakdown of fees in CHF	Year 1		Year 2		Year 3		Year 4	Total BBA in CHF
	Semester 1	Semester 2	Semester 3	Semester 4	Semester 5	Semester 6	Semester 7	
	From home	Internship	Bulle	Bulle	Internship	Bulle	Bulle	
Compulsory expenses								
Tuition fees	37,450		32,550	32,550		32,550	32,550	167,650
Learning resources	1,200		600	600		600	600	3,600
Business field trip							1,500	1,500
Health and accident insurance ¹			850	1,700		850	850	4,250
Administrative fees			490	490		490	490	1,960
Total academic compulsory expenses	38,650		34,490	35,340		34,490	35,990	178,960
Food and beverage prepaid			3,700	3,700				7,400
Double superior room - en-suite bathroom			5,850	5,850				11,700
Total living compulsory expenses			9,550	9,550				19,100
Optional accommodation and F&B fees								
Food and beverage prepaid						2,700	2,700	
Double superior room – en-suite bathroom						5,850	5,850	
Lodging upgrade								
A – Single standard room – shared bathroom								
B – Single superior room – en-suite bathroom			3,700	3,700		3,700	3,700	

1. Please refer to the chapter on 'Insurance' in the terms and conditions section.

Glion reserves the right to review and modify the fees and Terms and Conditions of each semester at any time and without prior notice. To maintain the standards expected from the institution, the fees are reviewed annually.

Terms & conditions

Application fee

A non-refundable application fee of CHF 275 is required with each application for Glion.

Damage deposit

A refundable damage deposit of CHF 1,250 is required to cover any damage caused to Glion property by the student during his or her studies, regardless of the student living on campus or not. This deposit also covers the uniform deposit as well as other items including the deposit for a locker and a washing machine card. It is payable at the time of the student's first invoice and will be credited on the student's account at the end of their last academic semester. The remaining positive balance (providing no damage or charges have been incurred during their stay) will be refunded to the official sponsor three months after the end of their last academic semester.

Fees for studies

TUITION FEES COVER:

Tuition, some events and facilities (i.e. conferences, leisure and sports activities, etc.), Luxury Gastronomy and Hospitality Masterclass in semester 1 (transportation, accommodation, half board and other school-planned activities), other school supplies, administration charges for internship(s), Swiss VAT, contribution to the Alumni Association of Glion (AAG), tutoring (when necessary), industry presentations, examiner fees, access to the Health & Welfare Counselor, and career counseling. Any unused services, clothes, school supplies, benefits, etc., included in the main fees are non-refundable.

LEARNING RESOURCES FOR GLION CONNECT BBA SEMESTER 1 FEES COVER:

Learning materials such as e-books; access to e-library, online database and media-rich interactive learning platforms with access to tutorial videos and related course support materials; online courses; Artificial Intelligence tutor app; access to Management Property System copyright and licenses; and various aroma nosing kits delivered to your home during the first semester, etc.

LEARNING RESOURCES FOR SEMESTERS 3 TO 7 FEES COVER:

Various learning materials such as textbooks, e-books, access to library and online database, etc.

ADMINISTRATIVE FEES COVER:

The school's administrative costs related to the student's study visa and residence permit (excluding legal and court charges if the visa or permit is refused, and an appeal is made by the student), as well as administrative services such as communal & cantonal fees obligations.

COMPULSORY ACADEMIC & LIVING EXPENSES COVER:

The application fee, the damage deposit, accommodation and food & beverage prepaid (in semesters 3 and 4 only), business field trip in semester 7, learning resources, practical arts courses apparel, and health & accident insurance.

BUSINESS FIELD TRIP FEES MAY COVER DEPENDING ON THE LOCATION:

Transportation, lodging, logistics, activities, and academic delivery and assessments. Field trips are a compulsory part of our BBA programs: they are subject to assessments and are an integral part of the BBA7 grades and students' results. The fee remains due in case the student doesn't attend the trip.

FEES DO NOT COVER THE FOLLOWING OPTIONAL OR ADDITIONAL EXPENSES:

Room and food & beverage (F&B) prepaid fees (in semesters 1, 6 and 7 only), any subsequent F&B top ups, special accommodation, parking, personal out-of-pocket expenses (including travel to and from the campus and the site of the student's internship), a laptop, resit fees, on-campus or online retake and submission fees, and the LINGUASKILLS exam fee.

Room

Room fees include accommodation in a double superior room with en-suite bathroom. Depending on availability, students might be assigned a double standard room with shared bathroom (with a reduction of CHF 500.- per semester).

New students who have paid the pre-payment and have received their acceptance documents will be invited to select their room on the accommodation platform as soon as it is opened. The room type will be confirmed only upon receipt of the full due amount by the official payment deadline on a first-paid, first-served basis.

Returning students should be able to select their room choice before receiving the pro-forma invoice for the following semester and the room type will be confirmed only upon receipt of the full due amount by the official payment deadline on a first-paid, first-served basis.

Subject to availability, students can select a single room for an additional fee. Room selection and confirmation are per semester. There is high demand for the limited number of these rooms, so we advise students to settle the full due amount as early as possible, as room allocation occurs on a first-paid, first-served basis. Students risk losing their room upgrade choice if they do not meet the deadline of the full payment.

A late cancellation fee may be charged as per the accommodation policy.

The prices below are in Swiss Francs, per person, for the duration of one semester, and in addition to the double superior room with en-suite bathroom fee:

ROOM CATEGORY AND FEATURES	ADDITIONAL FEES
A – Single standard room with shared bathroom (Glion campus only)	CHF 2,400
B – Single superior room with en-suite bathroom	CHF 3,700

Campus closures in 2023-2024

Rooms are not available to students and F&B services will not be provided during the following period:

- From 24 December 2023 to 6 January 2024 inclusive

Prepaid food & beverage account (based on consumption)

At the beginning of each semester, the F&B prepaid card is charged with the amount specified on the pro-forma invoice. This card can be used in the various outlets on campus. The prepaid amount must be used before the end of the semester and is not refundable nor transferrable. Students can top-up their card at any time. Glion reserves the right to suspend the F&B meal plan account at any time for special reasons (i.e. suspension of studies, non-payment of semester fees).

Other expenses

It is estimated that students require, on average, a sum of CHF 500 per month to finance their out-of-pocket expenses such as snacks and drinks, entertainment, personal supplies, laundry, and any other personal expenses.

Insurance

Health and accident insurance is mandatory in Switzerland; therefore, non-Swiss resident students are required to take the health and accident insurance provided by Glion, which covers them while on campus and on internship. However, if students have a private, valid insurance coverage equivalent to the Swiss health insurance coverage scheme, they are required to follow the procedure to become exempted by the Swiss authorities (information about exemption and the validation of foreign insurance plans is available from the Admissions Department). Students under a European health insurance scheme who wish to use this coverage whilst studying at Glion are required to provide a valid copy of their personal health insurance card to have the health insurance fee deducted from their invoice for the semester. If students fail to complete this procedure prior to their registration on campus, they will automatically be registered for the insurance provided by Glion at the most competitive rate, which may vary from one semester to another. Students who have been granted the exemption by Swiss authorities are responsible for verifying the validity of their private health and accident insurance coverage in Switzerland and on internship in Switzerland or abroad; Glion will not cover any health or accident-related expenses. Personal and private insurance, to cover issues

such as damage or theft of personal property, is not mandatory but is strongly recommended and is the student's responsibility. Glion cannot be held responsible for the theft of personal belongings, student damage or third-party insurance. The health insurance fee invoice for the internship semester(s) will be sent with the invoice for the previous on-campus semester.

Internships

All students are requested to complete their internship(s) in establishments approved by Glion. The main objective is to prepare students for their professional careers by developing their managerial, entrepreneurial and personal skills to the fullest through interesting and challenging internships. Glion has established excellent relationships within the hospitality and tourism industries, and a wide choice of training opportunities is offered to students in large, medium or small companies in Switzerland and/or abroad. However, some countries can be restricted by government visa/work permit policies and/or language requirements. Although internships are generally paid by the employer, the remuneration received cannot be expected to finance studies at Glion.

Laptop policy

Students will need to have individual access to our Intranet site, which hosts student information including support, teaching documents and other learning resources. Students will also need to use the Internet for their project research to access online library resources or emails. Students must bring their own laptop that meets Glion's requirements. Laptop specifications will be sent directly to the student upon confirmation of their enrolment and are also published on our website under www.glion.edu/new-students

Visa application procedure for accepted candidates

Accepted candidates will receive an acceptance letter from the Admissions Department detailing the visa application procedure.

Students are responsible for completing the visa application procedure and are strongly advised to apply immediately as it takes at least two months to obtain a visa. If the student is a national of an EU/EEA country or Switzerland, a visa is not required to study in Switzerland.

For those who need an entry visa, it is imperative to request a Type D Study visa (not a tourist visa). Candidates must make a personal request at the Swiss Embassy/Consulate in their country of residence and present the school's attestation.

Once the visa is approved (after 8 to 12 weeks), the embassy/consulate will notify the candidate who then must collect the original visa from the embassy/consulate and other supporting documents listed on the website of the local Swiss consulate.

Pre-payment

New students will receive their acceptance documents after receipt of the CHF 5,000.- pre-payment. This pre-payment confirms the place in the program and is non-refundable, except in case of mitigating circumstances assessed by the Students Accounting Committee. The pre-payment is deducted from the student's first invoice.

Please note: If the student postpones his or her studies after the pre-payment has been made, the balance will be carried forward to the next two intakes (one year) only.

Sponsorship

Sponsorship is a financial commitment by a sponsor (parent, legal guardian or any other person) where the sponsor undertakes to pay any fees and other charges on behalf of the student. Notwithstanding any sponsorship commitment as part of the application process, the student remains liable for any outstanding debt. Any reference in these Terms and Conditions to liability of students shall also infer liability on the sponsor of the student as the case may be and such liability is joint and several.

Payment

Payments must be made in full in Swiss Francs no later than 15th November (for the Spring intake) or 15th May (for the Fall intake), unless a payment plan contract has been approved. For returning students, this payment confirms their place in the program and room allocation. Students will not be permitted to begin the semester until the due amount has been received in full. Academic documentation (transcript of grades, degrees, attestations, etc.) are only delivered/awarded after all due fees and charges have been paid in full. Glion reserves the right to suspend from his or her studies, at any time, a student with pending due amounts or non-respected payment plan installments.

Scholarships

As a private institute, Glion provides a limited number of scholarships for new and returning students. Scholarships are competitive and linked to Glion's admissions strategy, which aims to assist motivated young people to study at our institution. Each scholarship has specific criteria, and eligibility for a scholarship is examined on a case-by-case basis for those students who have submitted a complete application. Scholarships are granted at Glion's sole discretion. Scholarships apply to tuition only, are not cumulative and do not apply to on-campus or online retake fees. The Scholarship Policy is reviewed each year and can be changed at any time and without prior notice.

Refund policy

Except as described hereinafter, all fees outlined and paid for are non-refundable. As per the pre-payment section, if a new student cancels before the official arrival date on campus, only the pre-payment of CHF 5,000 will be retained. If a student is dismissed or withdraws from the program during a semester (after the official check-in day), all fees are non-refundable.

If after the full payment deadline, a returning student withdraws from the program, postpones their semester or doesn't attend check-in, then a cancellation fee of CHF 500 will apply.

If the student has to take a break from their studies due to mitigating circumstances approved by the Glion Students Accounting committee, any unused fees for tuition, accommodation and the remaining credit of the F&B prepaid card will be credited if the student returns to Glion within two years. The unused tuition and accommodation fees are proportional to the number of weeks remaining in the semester that have been invoiced for. In any case, if the due fees for the semester have not been settled in full, the outstanding amount will be (or become in case of payment plan) immediately due and Glion will ask for instant payment.

At the end of the studies (or if the student definitively withdraws), the sponsor can claim for the refund of the positive balance for a maximum of two years after the last official check-out day of their last on campus semester.





Glion Connect BBA 20 – the essentials

Remote learning program
20 weeks

#GLIONCONNECT

#GLIONHOSPITALITYSCHOOL



+41 (0)21 966 35 35
info@glion.edu
glion.edu